



Amarr® Rolling Steel Commercial Doors

ROLLING SERVICE DOOR



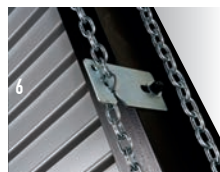
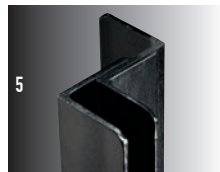
INSULATED SERVICE DOOR



Amarr 4000^{SERIES} ROLLING SERVICE DOOR

Technical Features

1. Oil tempered torsion springs designed for 50,000 life cycles.
2. Cast iron stops.
3. 1/4" thick (minimum) steel plate brackets.
4. Heavy-duty cast iron gears.
5. Structural angle guides and bottom bar.
6. Chain keeper.
7. Optional cylinder locks.



Amarr 4100^{SERIES} INSULATED SERVICE DOOR

Technical Features

1. Heavy-duty vinyl extrusions snap into the guides to reduce air and dust infiltration and to weatherstrip the door jambs.
2. A water-resistant hood baffle remains flexible in cold weather and helps reduce air infiltration around the hood.
3. Insulated, interlocking slats provide energy efficiency and a clean appearance inside and out.
4. Solid insulation is inserted between galvanized steel slats to ensure consistent density and complete insulating coverage.
5. The bottom of the door is sealed by a flexible, solid foam astragal.
6. Heavy duty cast iron gears.
7. Optional cylinder locks.
8. Cast iron stops.
9. Structural angle guides and bottom bar.



	Amarr 4000			Amarr 4010		Amarr 4020		Amarr 4030	
Slat Material	Steel			Stainless Steel		Clear Anodized Aluminum		Mill Finish Aluminum	
Material Thickness	22ga	20ga	18ga	20ga	20ga	0.040"	0.050"	0.040"	0.050"
Slat Height	2-1/4"		2-3/4"	2-1/4"	2-3/4"	2-1/4"	2-3/4"	2-1/4"	2-3/4"
Slat #	#5		#4	#5	#4	#5	#4	#5	#4
Max Door Width	18'	24'	40'*	24'	30'	20'	30'	20'	30'
Max Door Height	18'	24'	36'*	24'	24'	18'	22'	18'	22'

* Larger sizes may be available upon Engineering review.

	Amarr 4100			Amarr 4110		Amarr 4120		Amarr 4130	
Slat Material	Steel/Insulation/Steel			Stainless Steel / Insulation / Stainless Steel		Clear Anodized Aluminum / Insulation / Mill Finish Aluminum		Mill Finish Aluminum / Insulation / Mill Finish Aluminum	
Material Thickness	22/22ga	20/22ga	18/22ga	22/22ga	20/22ga	0.032"/0.032"		0.032"/0.032"	
Insulation	4.6 R-value Polystyrene 6.29 R-value Polyurethane			4.6 R-value Polystyrene 6.29 R-value Polyurethane		4.6 R-value Polystyrene 6.29 R-value Polyurethane		4.6 R-value Polystyrene 6.29 R-value Polyurethane	
Slat Height	3"			3"		3"		3"	
Slat #	#45			#45		#45		#45	
Max Door Width	24'	30'	40'*	24'	30'	20'		20'	
Max Door Height	24'	24'	36'*	24'	24'	18'		18'	

* Larger sizes may be available upon Engineering review.

AMARR® ROLLING STEEL OFFERING



Amarr®4000 SERIES **ROLLING SERVICE DOOR**

The standard of the industry, the Amarr 4000 Series provides excellent security, years of worry-free operation and abrasion-resistant paint.



Amarr®4100 SERIES **INSULATED SERVICE DOOR**

In applications where climate control is a must, the Amarr 4100 Series provides the protection you need with energy efficient 6.29 R-value polyurethane insulation or 4.60 R-value polystyrene insulation.



Amarr®4200 SERIES **SERVICE FIRE DOOR**

For reliable protection every time, the Amarr 4200 Series fire door provides peace of mind with its unmatched performance with conventional and advanced fire door systems, protecting employees, products and property from fire.



Amarr®4300 SERIES **ROLLING GRILLES**

For a clean look, maximum visibility and outstanding security, the Amarr 4300 Series rolling grilles have strong, solid aluminum rods and are built to stand up to extensive use.



Amarr®4400 SERIES **COUNTER DOOR**

Designed specifically for countertop security, the Amarr 4400 Series creates an outstanding first impression with clean lines and professional appearance.



Amarr®4500 SERIES **COUNTER FIRE DOOR**

The Amarr 4500 Series counter fire door offers all the aesthetic features of the Amarr 4400, with the fire-protection of the full size Amarr 4200 to protect your elevated openings in a fire wall.

COUNTER DOOR



Amarr 4411 with integral sill and frame

COUNTER FIRE DOOR



Amarr 4400^{SERIES} COUNTER DOOR

Technical Features

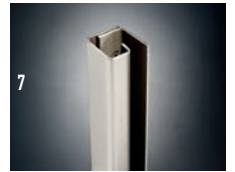
1. Clear anodized extruded aluminum, prefinished steel or #4 brushed stainless steel curtain.
2. Tubular extruded aluminum bottom bar with thumbturn locks and finger lifts.
3. Box shaped guides for neat, clean appearance.
4. Hood matches curtain material in type and color.
5. Operation may be push up, awning crank, tubular motor, or wall mount motor. Awning crank or motor operation required over 9'4" wide.
6. Well balanced, maintenance free, spring design.
7. 10" bracket size
8. Oil tempered torsion springs designed for 20,000 life cycles.



Amarr 4500^{SERIES} COUNTER FIRE DOOR

Technical Features

1. Available in conventional fusible link, or advanced fire door systems.
2. Prefinished steel or #4 brushed stainless steel curtain.
3. Designed for counters, windows, conveyers and other elevated openings in fire walls.
4. Available with 1-1/2 hour and 3 hour ratings.
5. Conventional systems can be reset from side of opening reducing testing costs.
6. Advanced systems do not require mechanical resetting.
7. Box shaped guides provide a clean, professional appearance.
8. Operation may be push up, crank, chain hoist or failsafe motor operation.
9. Optional fail-safe release devices.
10. Optional warning strobes, smoke detectors, voice/alarm annunciators.



	Amarr 4400	Amarr 4401	Amarr 4410	Amarr 4411	Amarr 4420
Slat Material	Steel	Steel with Integral Sill and Frame	Stainless Steel	Stainless Steel with Integral Sill and Frame	Clear Anodized Aluminum
Material Thickness	22ga	22ga	22ga	22ga	0.050"
Slat Height	1-1/4"	1-1/4"	1-1/4"	1-1/4"	1-5/16"
Slat #	#10	#10	#10	#10	#8
Max Door Width	20'	14'	20'	14'	20'
Max Door Height	9'	6'	9'	6'	9'

	Amarr 4500	Amarr 4501	Amarr 4510	Amarr 4511
Slat Material	Steel	Steel with Integral Sill and Frame	Stainless Steel	Stainless Steel with Integral Sill and Frame
Material Thickness	22ga	22ga	22ga	22ga
Slat Height	1-1/4"	1-1/4"	1-1/4"	1-1/4"
Slat #	#10	#10	#10	#10
Max Door Width	14'	10'	14'	10'
Max Door Height	9'	6'	9'	6'

Note: Per NFPA*80, all fire doors and fire door systems should be installed and serviced by trained technicians and require documented annual inspection and testing.

Countertops used in fire walls are required to be rated.

Rated countertops are available in stainless steel and laminated finish.

*National Fire Protection Association

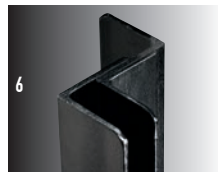
SERVICE FIRE DOOR



Amarr 4200 SERIES SERVICE FIRE DOOR

Technical Features

1. Available in conventional fusible link activated systems, or advanced fire door systems.
2. Advanced fire door systems do not require mechanical resetting and provide a controlled closing speed that will not exceed 9" per second.
3. Oil tempered torsion springs designed for 50,000 life cycles.
4. Heavy-duty cast iron gears.
5. Door can be easily tested and reset from one side of the door.
6. Structural angle guides and bottom bar.
7. Approved for concrete, masonry and structural steel wall types.
8. Available with up to a 4 hour rating.
9. Release mechanism parts designed to provide years of testing without maintenance or repairs.
10. Door can be tested in fully closed position without damaging the mechanisms.
11. Optional cylinder locks.
12. Optional electromagnetic release device.



	Amarr 4200			Amarr 4200 Insulated		Amarr 4210	
Slat Material	Steel			Steel / Insulation / Steel		Stainless Steel	
Material Thickness	22ga	20ga	18ga	22/22ga	20/22ga	22ga	20ga
Insulation	na			5.3 R-value Mineral Wool Insulated Slat		na	
Slat Height	2-1/4"		2-3/4"	3"		2-1/4"	
Slat #	#5		#4	#45		#5	
Max Door Width	18'	24'	36'	24'	24'	18'	24'
Max Door Height	18'	24'	24'	16'	16'	18'	24'

Note: Per NFPA* 80, all fire doors and fire door systems should be installed and serviced by trained technicians and require documented annual inspection and testing.

*National Fire Protection Association

ROLLING GRILLE DOOR



Amarr 4300 SERIES ROLLING GRILLE DOOR

Technical Features

1. Oil tempered torsion springs designed for 50,000 life cycles.
2. Solid aluminum 5/16" rods.
3. Durable links (standard 1/8" thick, or heavy-duty 3/16" thick).
4. Cylinder locks concealed in the bottom bar.
5. Choice of two grille types:
 - Standard up to 30' wide
 - Heavy-duty up to 30' wide
6. Heavy-duty extruded aluminum guides and bottom bar.

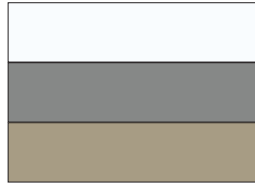


	Amarr 4320 Standard-duty	Amarr 4320 Heavy-duty	Amarr 4330 Standard-duty	Amarr 4330 Heavy-duty
Grille Rod & Link Material	Solid Clear Anodized Aluminum	Solid Clear Anodized Aluminum	Solid Mill Finish Aluminum	Solid Mill Finish Aluminum
Rod Thickness	5/16"	5/16" with 1/2" tube spacers	5/16"	5/16" with 1/2" tube spacers
Link Thickness	1/8"	3/16"	1/8"	3/16"
Max Door Width	30'	30'	30'	30'
Max Door Height	16'	16'	16'	16'

FINISH OPTIONS

Steel Models

- White, Gray and Tan
- Powder-coated – 180 colors
- Custom colors available (Subject to approval)



Aluminum Models

- Mill finish
- Clear or bronze anodized
- Powder-coated – 180 colors
- Custom colors available (Subject to approval)

SLATS OPTIONS



Window Slats



Perforated Slats

OPERATION OPTIONS

Steel Models

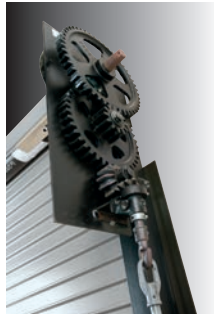
- Manual push up – limited to 80 sq. ft. or 8' tall
- Chain hoist
- Crank
- Electric opener

Grille Models

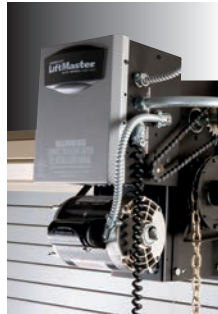
- Manual push up – up to 140 sq. ft. or 8' tall
- Chain hoist
- Crank
- Electric Opener



Chain



Crank



Electric Opener

WARRANTY

Domestic Shipments: Product guaranteed to be free from defects in workmanship and materials for a period of 2 years from date of factory shipment.

Export Shipments: Product guaranteed to be free from defects in workmanship and materials for a period of 1 year from date of factory shipment.

ENTREMATI~~C~~

Entrematic

165 Carriage Court
Winston-Salem, NC 27105
800.503.D00R
www.amarr.com

FOR TECHNICAL

QUESTIONS:
1.866.366.4814



Entrematic reserves the right to change specifications and designs without notice and without incurring obligations.

Entrematic products may be the subject of one or more U.S. and/or foreign, issued and/or pending, design and/or utility patents.

Amarr as word and logo are registered trademarks belonging to Entrematic Group AB or other companies controlled by the same organization. All rights reserved.

©Entrematic Group AB 2015. All rights reserved.
Printed in USA Form #6130315/7.5M/GVS